

LANDMARK OVERVIEW



PROVIDE HIGH-INTENSITY IN-HOME CARE TO OUR CHRONICALLY ILL, MEDICARE ADVANTAGE MEMBERS IN SELECT MICHIGAN LOWER PENINSULA COUNTIES.

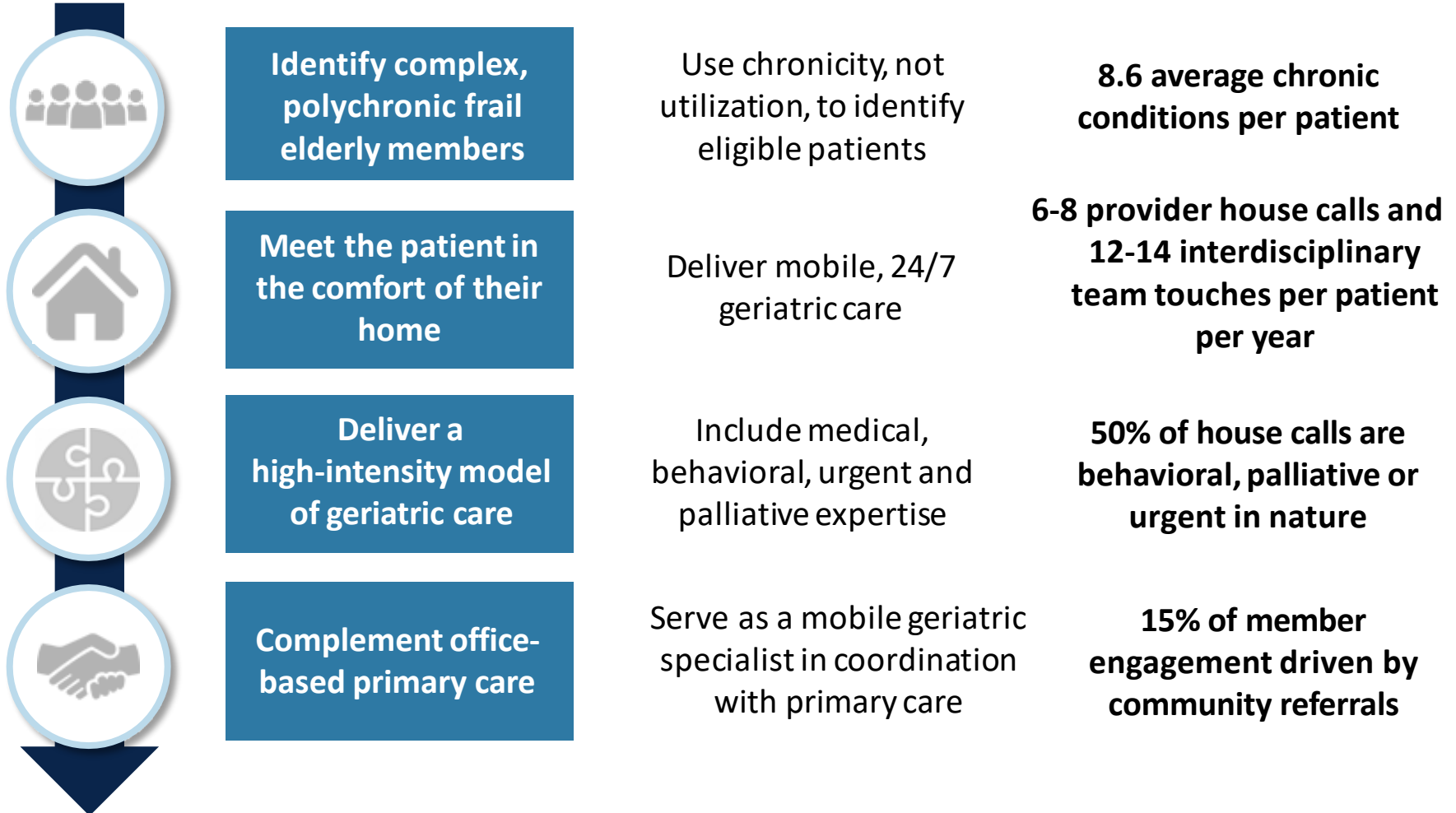
Utilizing a physician-led, interdisciplinary team, **the program will complement office-based primary care** with services such as **care management, behavioral health, medication management, 24/7 nurse triage, and urgent care** while incorporating **community organization support** and **social determinants of health insights**.

Program expansion will begin in July 2022 and continue through January 2023.

- **Improve member experience and the coordination and quality of care, resulting in better overall health and lower costs through the reduction of avoidable services** (for example, emergency department admissions)

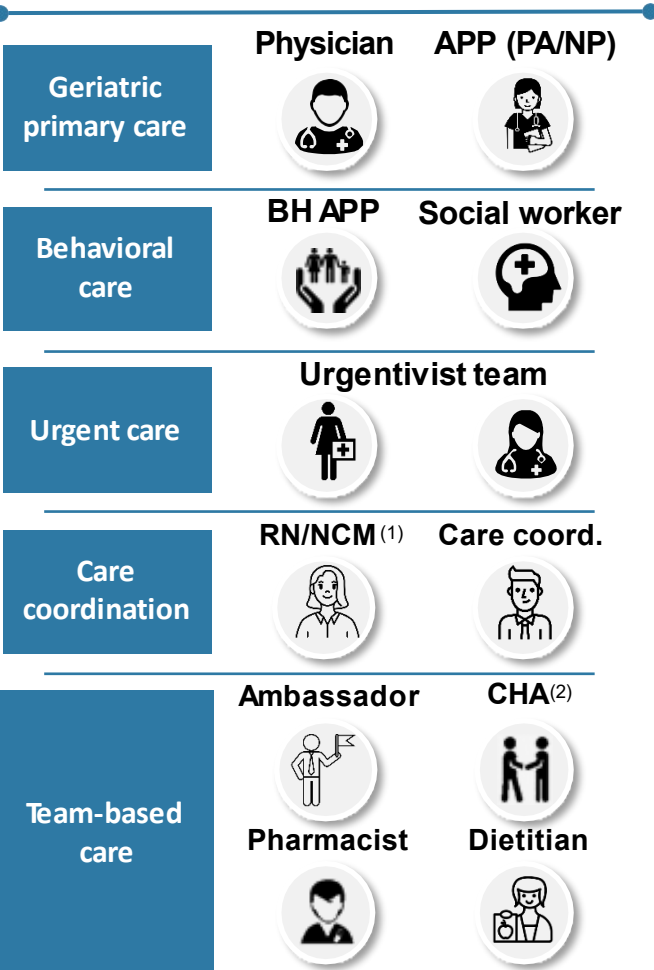
LANDMARK OVERVIEW

Landmark provides a 24/7/365 in-home care solution focused entirely on members with complex and chronic conditions.



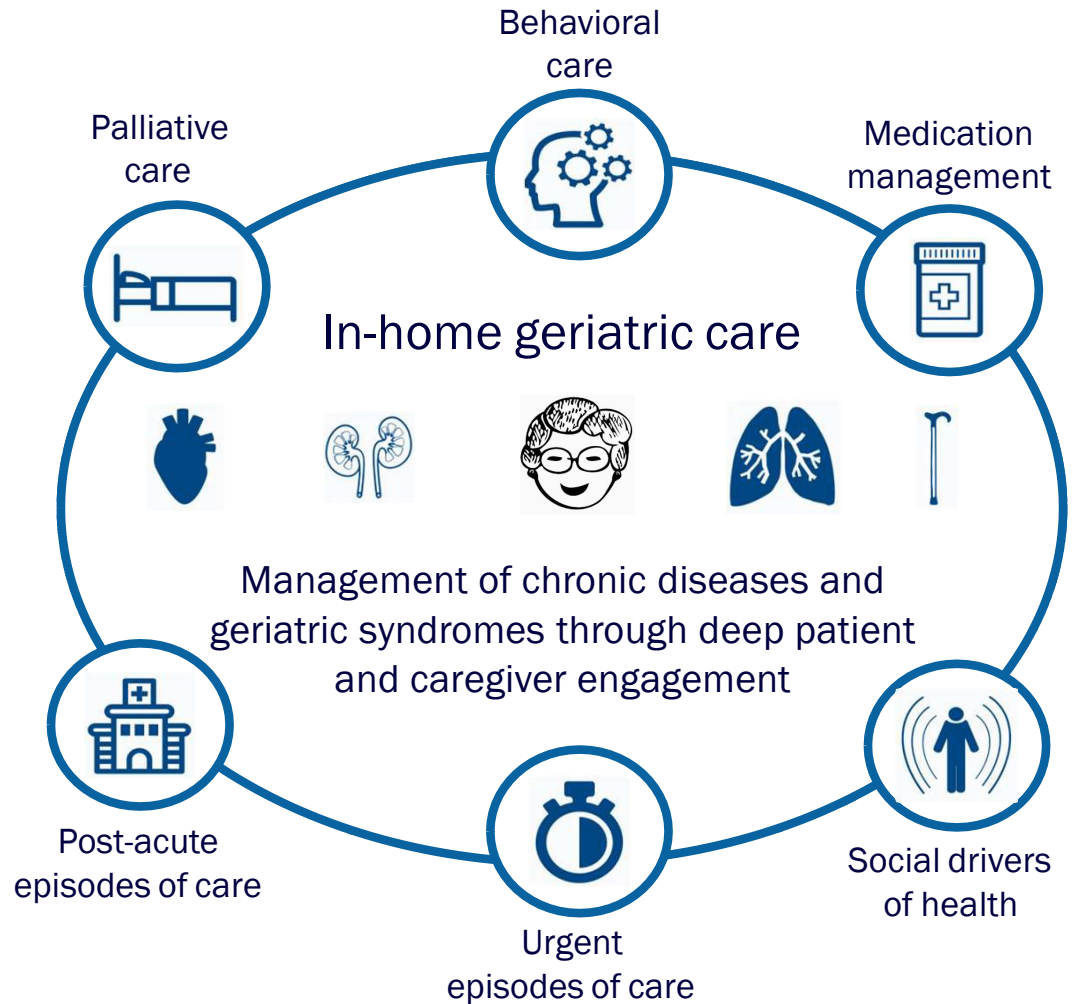
LANDMARK OVERVIEW

Physician-led, interdisciplinary team focuses on complex patients



(1) Nurse care manager. (2) Community health advocate.

... and delivers team-based geriatric care, with deep expertise across six Clinical Areas of Excellence



LANDMARK ELIGIBILITY

Current scope is Blue Cross and BCN Medicare Advantage members in select Michigan Lower Peninsula counties.

Members become eligible for Landmark after they have reached six points based on the table on the right, looking back at 24 months of paid claims.

- Members diagnosed with hemophilia are excluded, but eligible members that become diagnosed with hemophilia after eligibility remain eligible.
- Hospice members are excluded. If an eligible member enrolls in hospice, they are excluded the following month.

CHRONIC CONDITIONS

85+ years old

Atrial fibrillation

Cancer

Cerebral vascular disease

Chronic kidney disease

Coronary heart disease

Diabetes

Fluid and electrolyte disorders

Peripheral vascular disease

Pulmonary disease

Rheumatoid arthritis/osteoarthritis

Severe chronic liver disease

Heart failure

Behavioral health

Substance use disorder

Disabling condition

Protein-calorie malnutrition

End stage renal disease

Pressure ulcers with necrosis (Stage 4)